

Titine of Titine

Handwritten musical notation for the first staff of 'Titine of Titine'. It begins with a treble clef and a key signature of one flat (B-flat). The melody starts with a circled '2' above the first measure. The notation includes quarter notes, eighth notes, and sixteenth notes, with some notes beamed together.

Handwritten musical notation for the second staff of 'Titine of Titine'. It continues the melody from the first staff, featuring a triplet of eighth notes in the first measure and various rhythmic patterns of eighth and sixteenth notes.

Handwritten musical notation for the third staff of 'Titine of Titine'. The melody continues with a mix of eighth and sixteenth notes, including some beamed eighth notes and a quarter note.

Handwritten musical notation for the fourth staff of 'Titine of Titine'. This staff features a more complex rhythmic pattern with many beamed eighth and sixteenth notes, and a circled '1' above the first measure.

Handwritten musical notation for the fifth staff of 'Titine of Titine'. It includes a circled '2' above the first measure and features a triplet of eighth notes in the first measure, followed by eighth and sixteenth notes.

Handwritten musical notation for the sixth staff of 'Titine of Titine'. It begins with a circled '2' above the first measure and includes the instruction 'piccolo' written above the staff. The notation continues with eighth and sixteenth notes.

Titine Titine

Titin of Titine (trombone Sib)

Handwritten musical score for Trombone in C (Sib) for the piece "Titin of Titine". The score is written on a single staff in treble clef with a key signature of one sharp (F#) and a 3/4 time signature. It consists of 8 measures. Measure 1 starts with a circled "35". Measure 2 has a circled "36". Measure 3 has a circled "37". Measure 4 has a circled "38". Measure 5 has a circled "39". Measure 6 has a circled "40". Measure 7 has a circled "41". Measure 8 has a circled "42". The notation includes eighth and sixteenth notes, rests, and various articulation marks such as accents and slurs. There are also some handwritten annotations like "1", "2", and "3" above notes in measures 3, 4, and 8 respectively.

Four empty musical staves for accompaniment.

TITIN' OF TITINE (Soprano Sib)

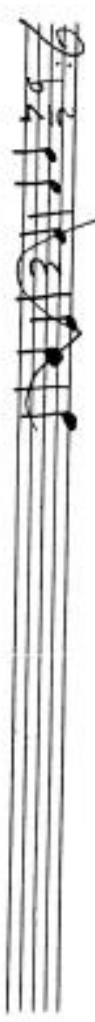
Handwritten musical score for 'TITIN' OF TITINE' for Soprano. The score is written on a single staff in 2/4 time, featuring a key signature of one flat (B-flat). The melody is characterized by eighth and sixteenth notes, often beamed together. There are several circled notes, likely indicating specific performance techniques or corrections. The piece concludes with a double bar line and a final note.

Two empty musical staves, one above the other, consisting of five lines each.

Tikim' of Titine (Baumette S. 6)

Handwritten musical score for 'Tikim' of Titine (Baumette S. 6). The score is written on a single staff in treble clef with a 2/4 time signature. It consists of several measures of music, including a key signature change to one sharp (F#) and various musical notations such as slurs, ties, and circled measure numbers (3, 4, 5, 6, 7, 8, 9, 10, 11, 12, 13, 14, 15, 16, 17, 18, 19, 20, 21, 22, 23, 24, 25, 26, 27, 28, 29, 30, 31, 32, 33, 34, 35, 36, 37, 38, 39, 40, 41, 42, 43, 44, 45, 46, 47, 48, 49, 50, 51, 52, 53, 54, 55, 56, 57, 58, 59, 60, 61, 62, 63, 64, 65, 66, 67, 68, 69, 70, 71, 72, 73, 74, 75, 76, 77, 78, 79, 80, 81, 82, 83, 84, 85, 86, 87, 88, 89, 90, 91, 92, 93, 94, 95, 96, 97, 98, 99, 100). The score ends with a double bar line and a repeat sign. There are some corrections or additions in the later measures, indicated by a circled '3' and a circled '5'.

TITIN' OF TITINE (Basse sib)



TITIN' of Titine (Basse sib)